



jordan fishwick

Hollinwood Road Disley Stockport



Hollinwood Road Disley Stockport SK12 2EB

£290,000




The Property

Ideally located in the heart of Disley Village and arranged over four floors, a beautiful and most deceptive terraced home. Vastly improved in recent years and ready to walk into. Character features throughout and complemented by a stunning open plan living room and re-fitted dining kitchen. There is lower ground floor boot/utility room, two first floor bedrooms, period style bathroom and a spacious second floor loft room with Velux skylights. OFF ROAD PARKING to the rear and an enclosed decked patio area. Pvc double glazing, gas central heating and available with No Chain. Viewing highly recommended.



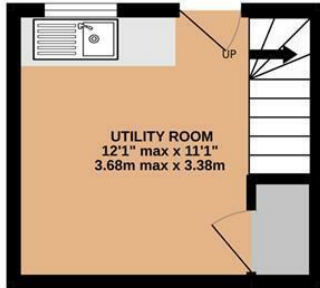
- Stunning Home
- Two Beds Plus Loft
- Convenient Disley Village Location
- Arranged Over Four Floors
- Off Road Parking and Decked Patio
- Pvc Double Glazing and Gas Central Heating
- Superb Open Plan Living Dining Kitchen
- Ready To Walk Into
- No Chain

Postcode SK12 2EB
EPC Rating C
Local Authority Cheshire East
Council Tax B

Energy Efficiency Rating		
	Current	Potential
Very energy efficient - lower running costs		
(92 plus) A		86
(81-91) B		
(69-80) C	71	
(55-68) D		
(39-54) E		
(21-38) F		
(1-20) G		
Not energy efficient - higher running costs		
England & Wales		EU Directive 2002/91/EC 



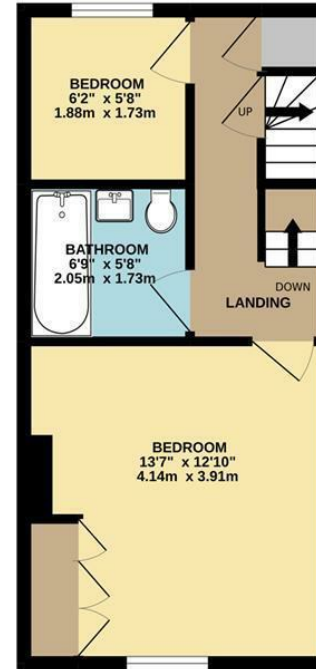
BASEMENT



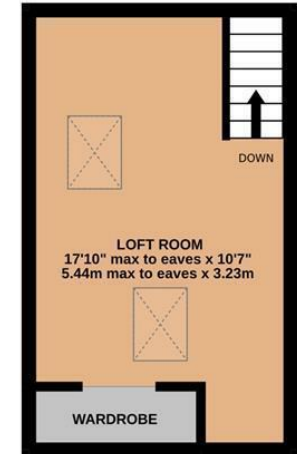
GROUND FLOOR



1ST FLOOR



2ND FLOOR



Whilst every attempt has been made to ensure the accuracy of the floorplan contained here, measurements of doors, windows, rooms and any other items are approximate and no responsibility is taken for any error, omission or mis-statement. This plan is for illustrative purposes only and should be used as such by any prospective purchaser. The services, systems and appliances shown have not been tested and no guarantee as to their operability or efficiency can be given.
Made with Metropix ©2022



These particulars are believed to be accurate but they are not guaranteed and do not form a contract. Neither Jordan Fishwick nor the vendor or lessor accept any responsibility in respect of these particulars, which are not intended to be statements or representations of fact and any intending purchaser or lessee must satisfy himself by inspection or otherwise as to the correctness of each of the statements contained in these particulars. Any floorplans on this brochure are for illustrative purposes only and are not necessarily to scale.

Offices at: Chorlton, Didsbury, Disley, Hale, Glossop, Macclesfield, Manchester Deansgate, Manchester Whitworth Street, New Mills, Sale, Wilmslow and Withington

14 Market St, Disley, Cheshire, Stockport SK12 2AA

01663 767878

disley@jordanfishwick.co.uk

www.jordanfishwick.co.uk